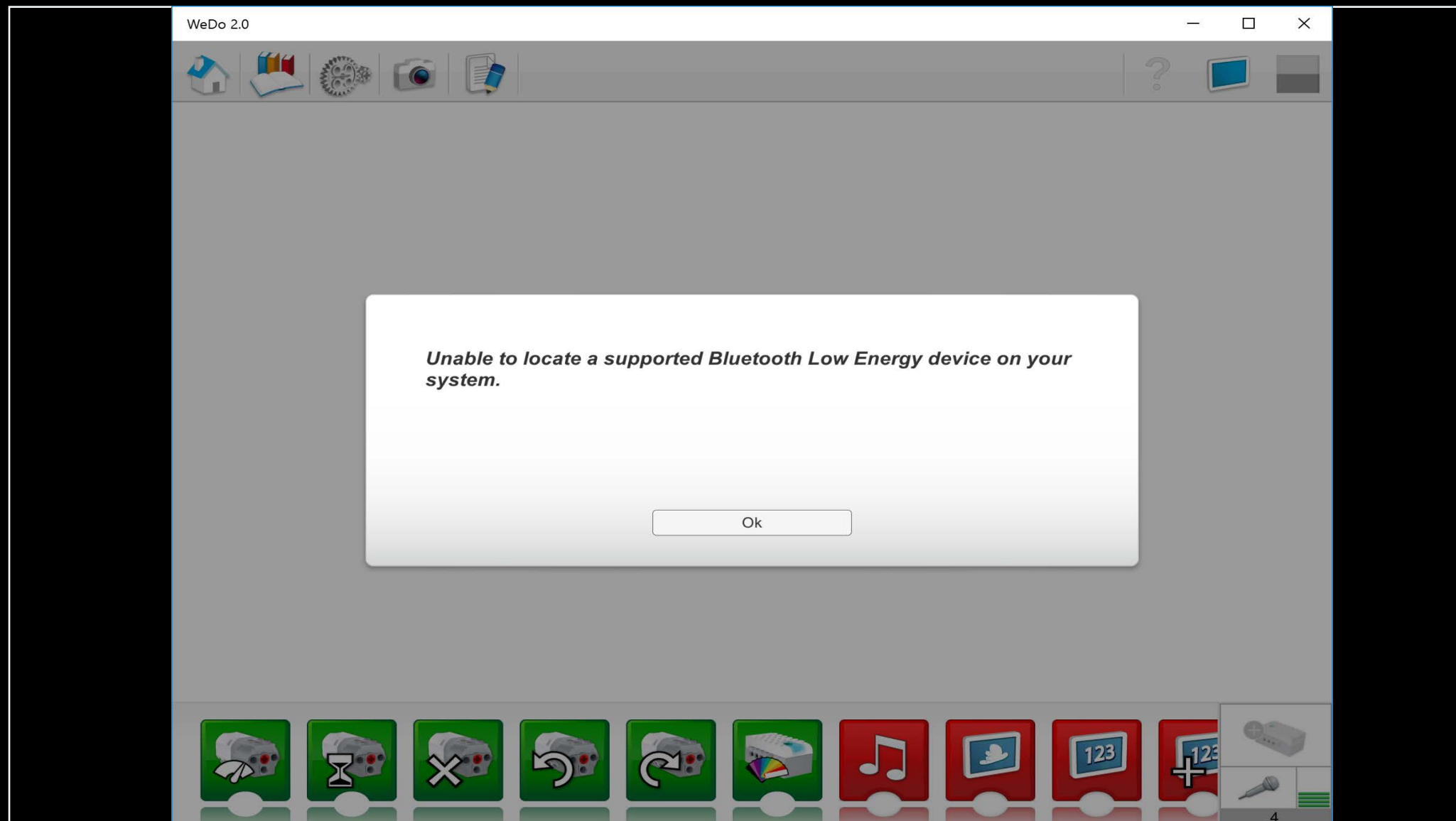


WeDo on Windows 10

How to connect with BLE dongle

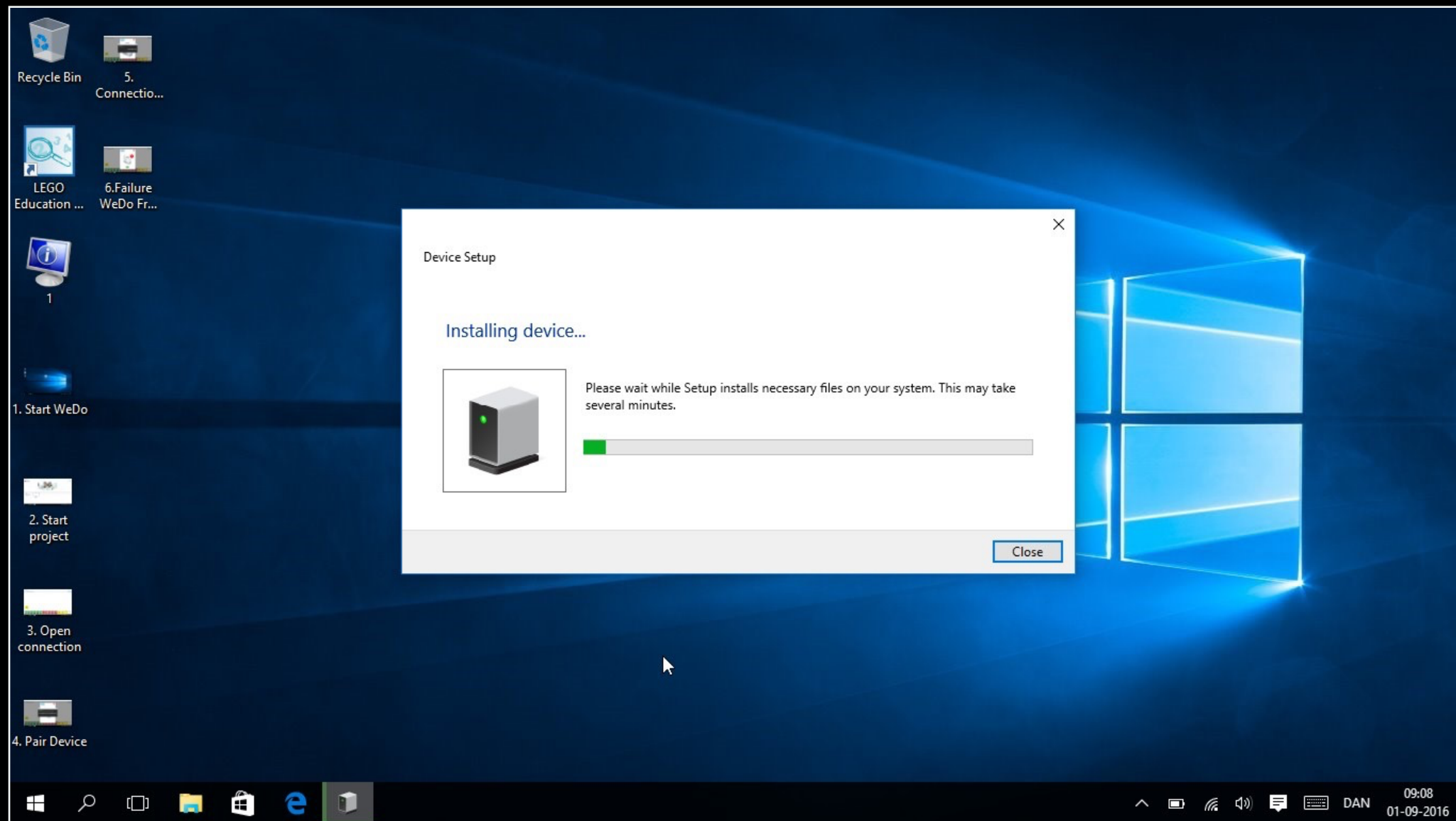


Using WeDo 2.0 on Windows 10 without built-in BLE will cause this error while trying to connect



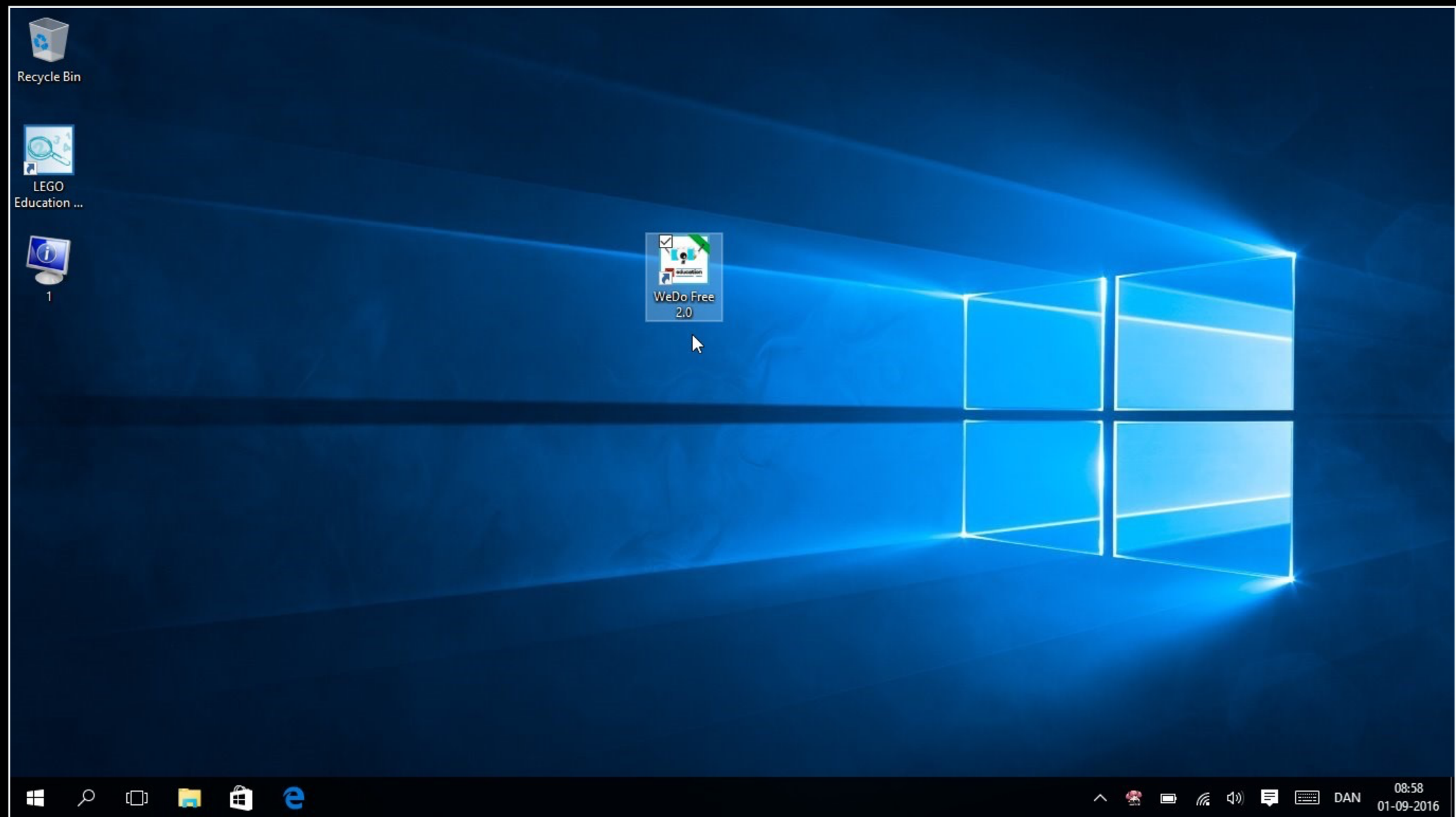
Avoid connection error by:

1. First you must exit WeDo
2. Insert BLE dongle into computer USB port.



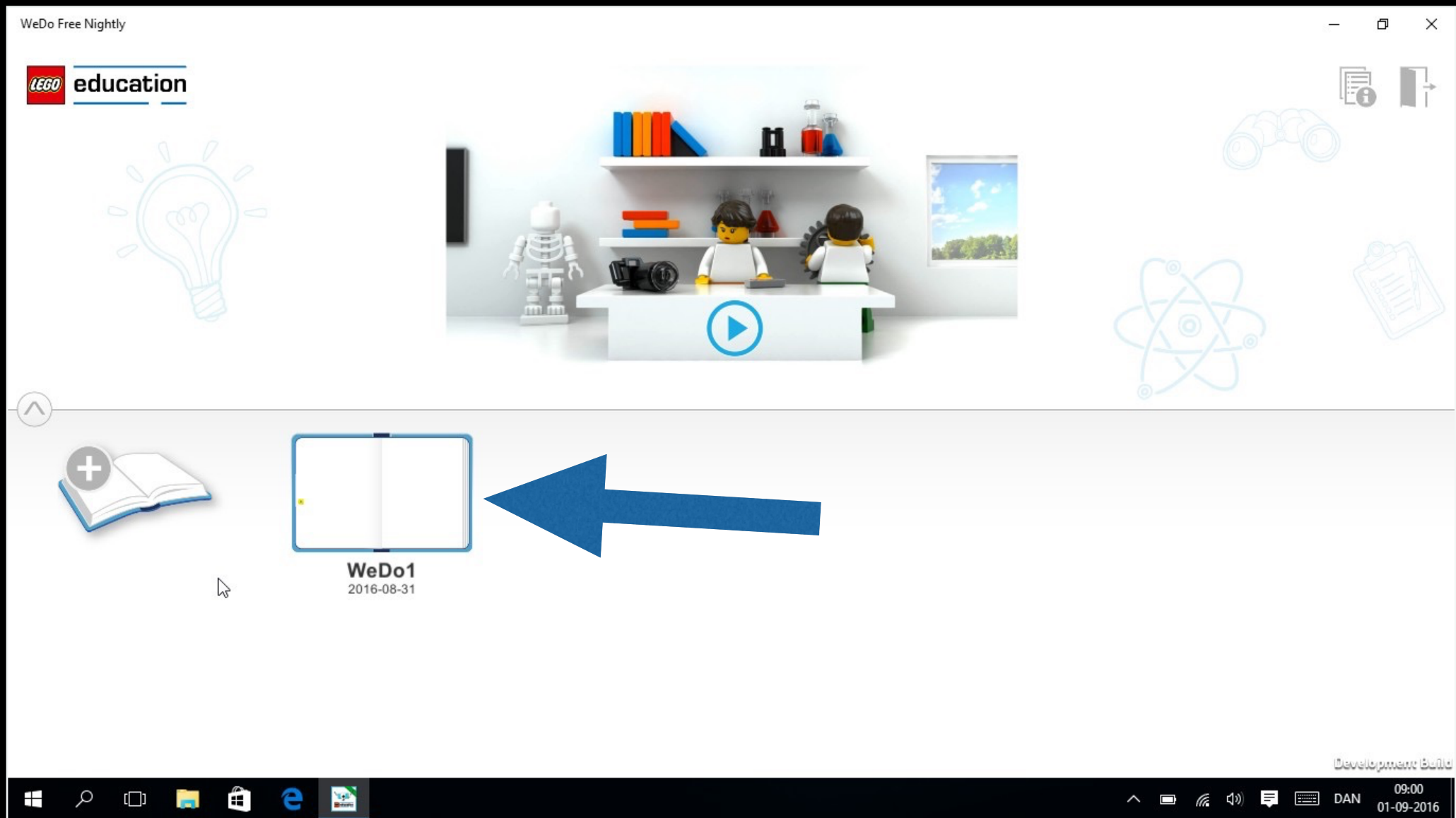
Install driver

3. Let Windows 10 search for and install a new driver for the BLE dongle.
4. Wait until the driver has been installed.

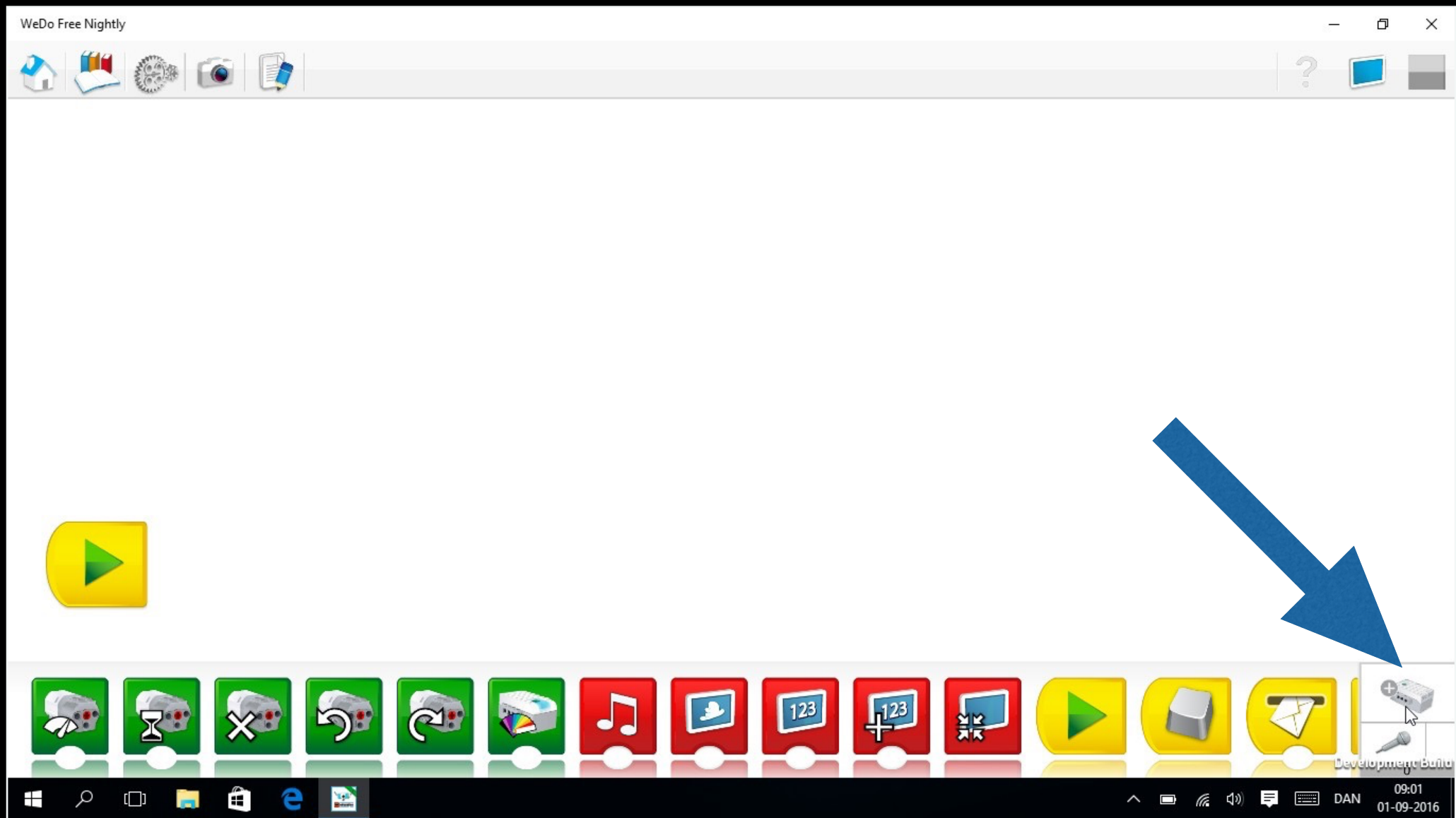


Start WeDo

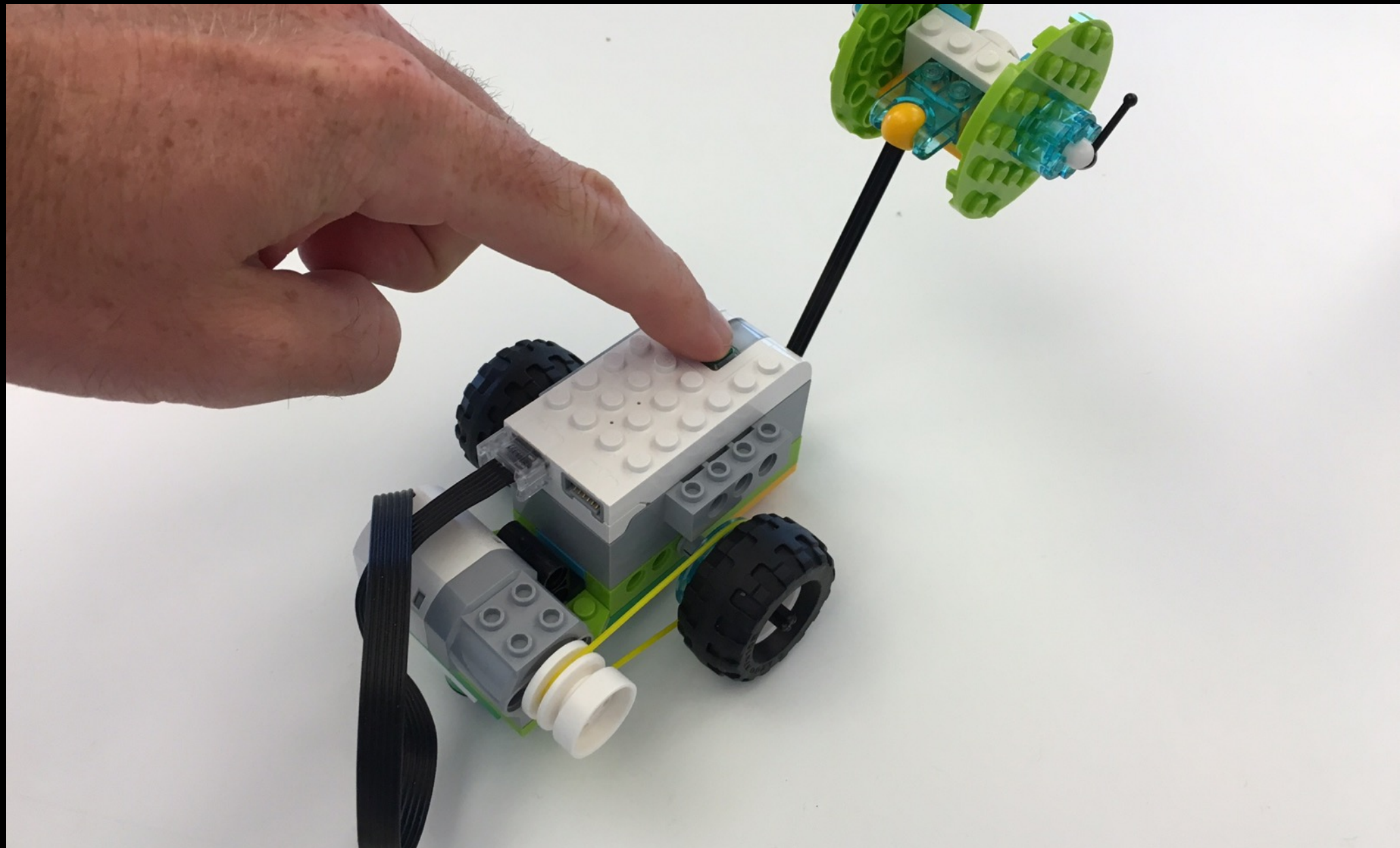
5. When the new driver has been installed start WeDo.



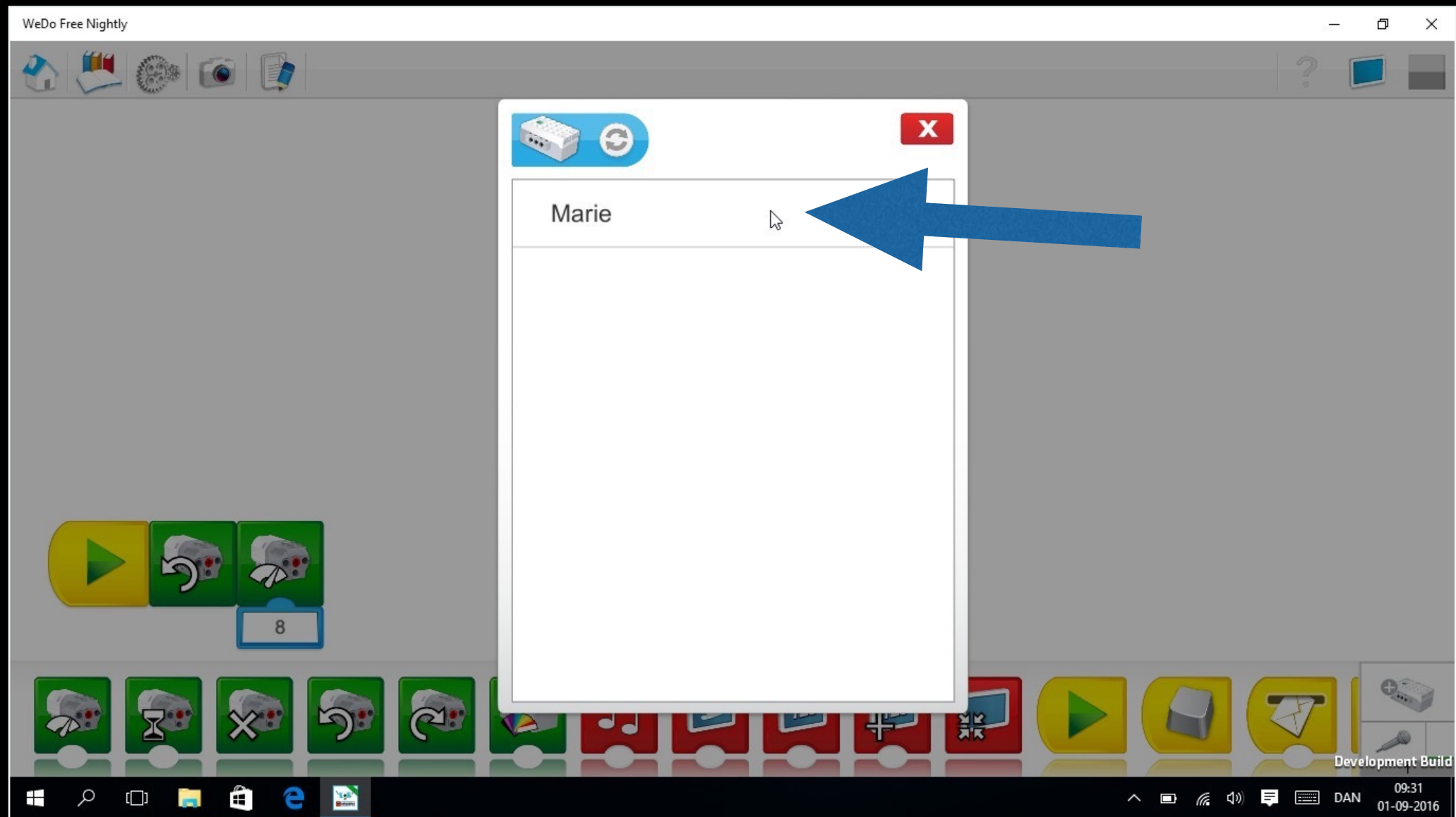
6. Open a project book



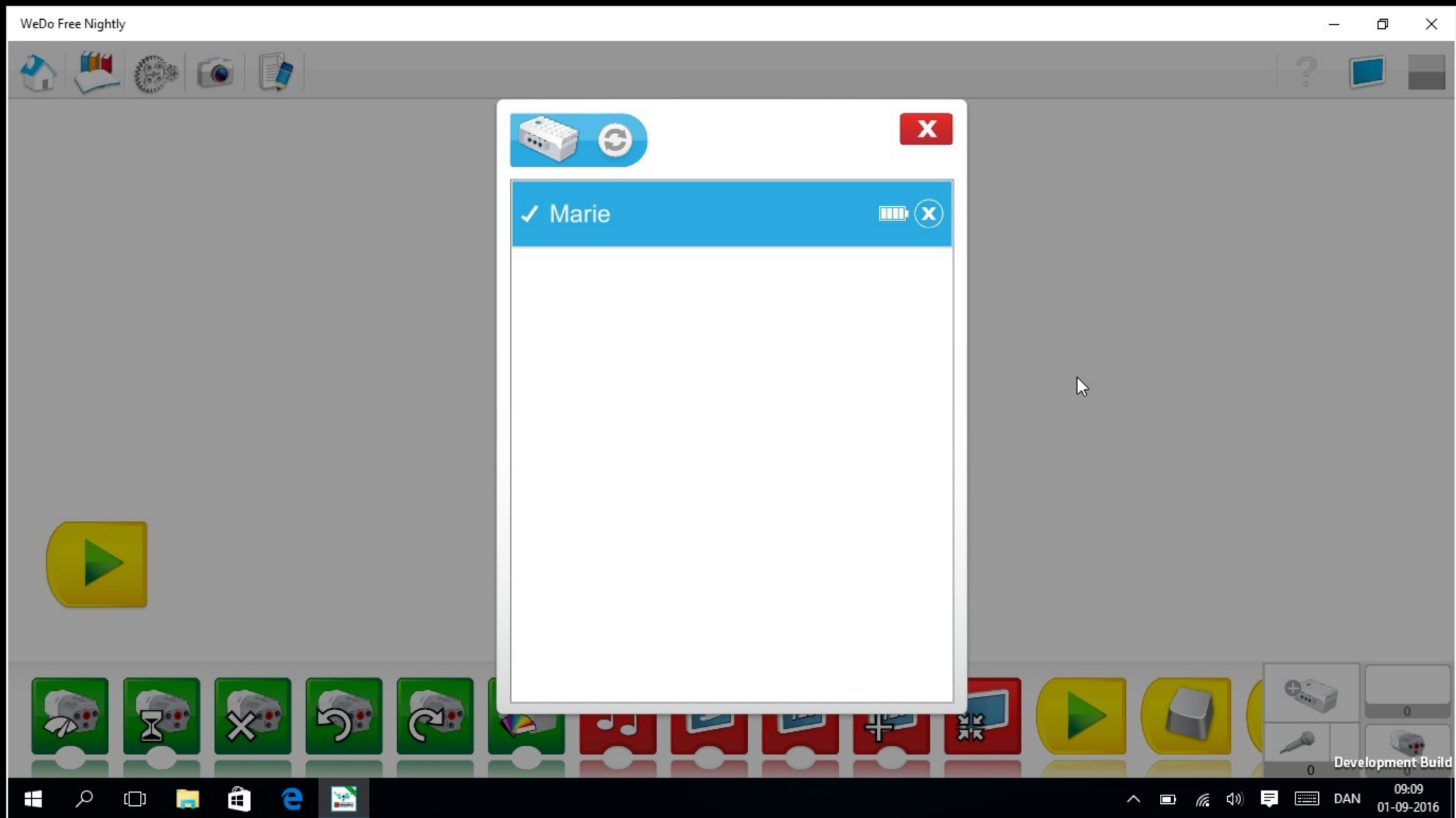
7. Open connection panel



8. Turn on WeDo Block



9. Connect by clicking the WeDo Block you want to connect to



10. Connection is now established